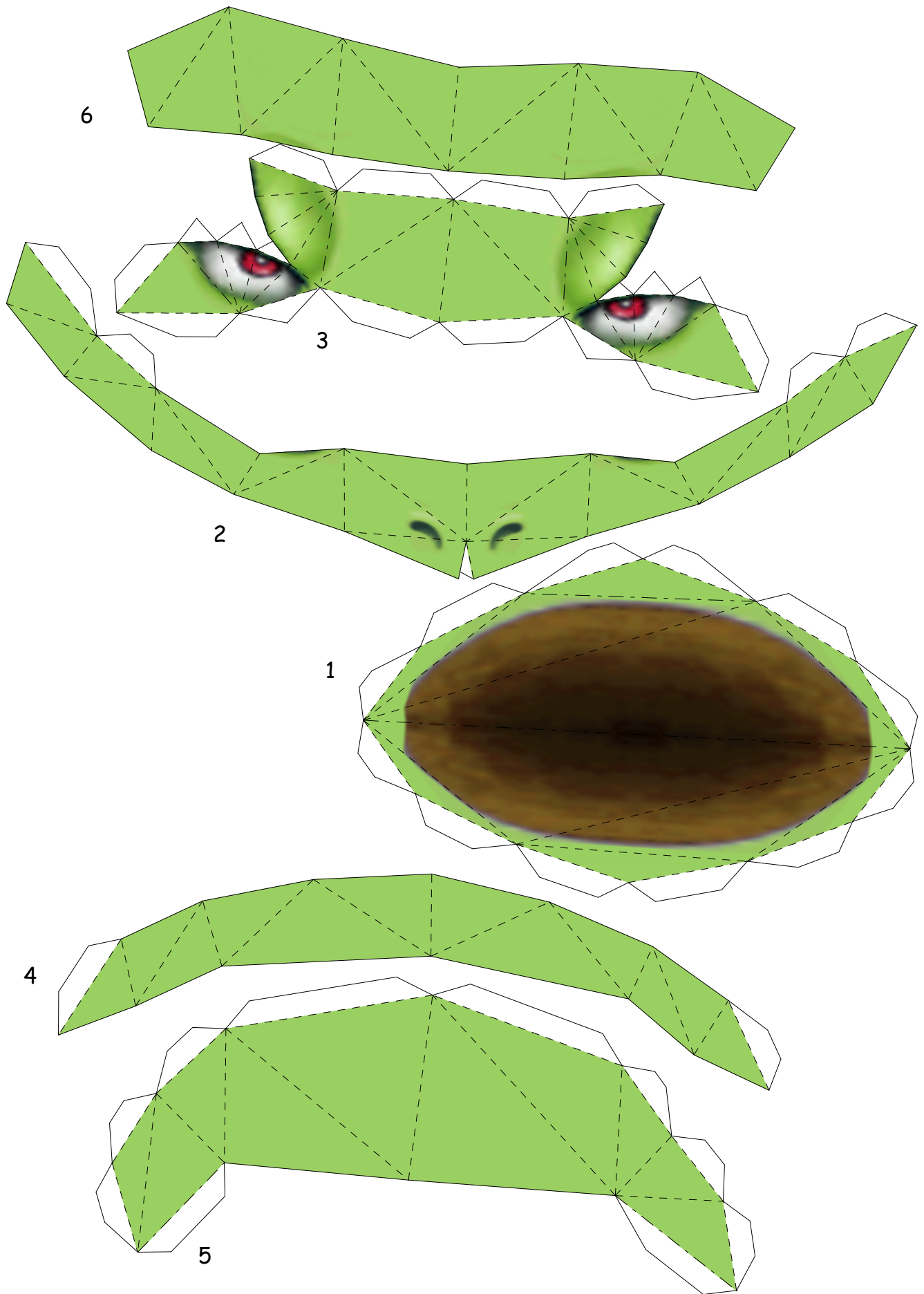




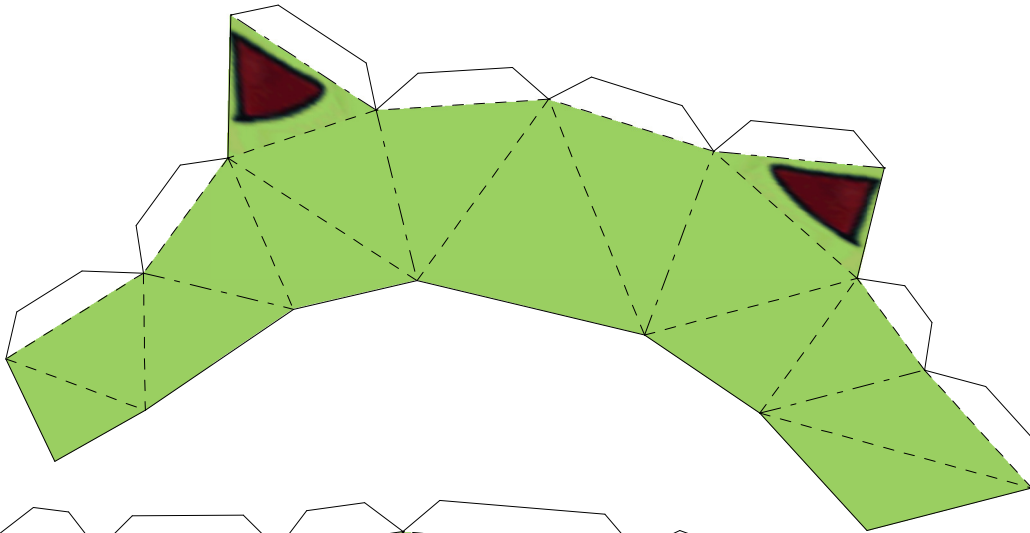
Venusaur

by Brandon

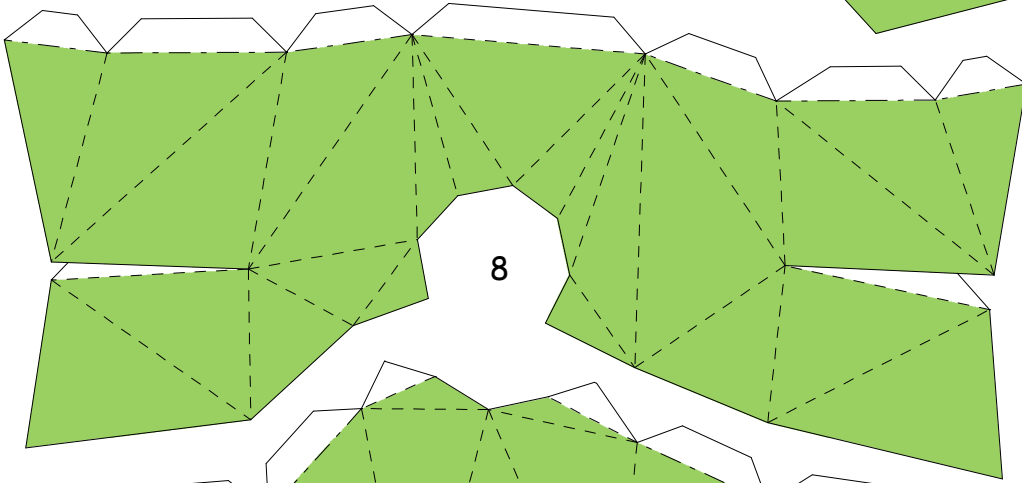
Paper Pokés
www.pokemonpapercraft.com



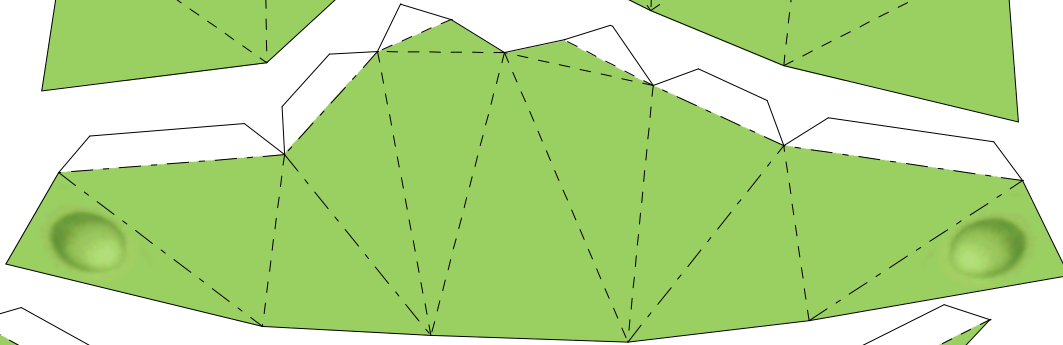
7



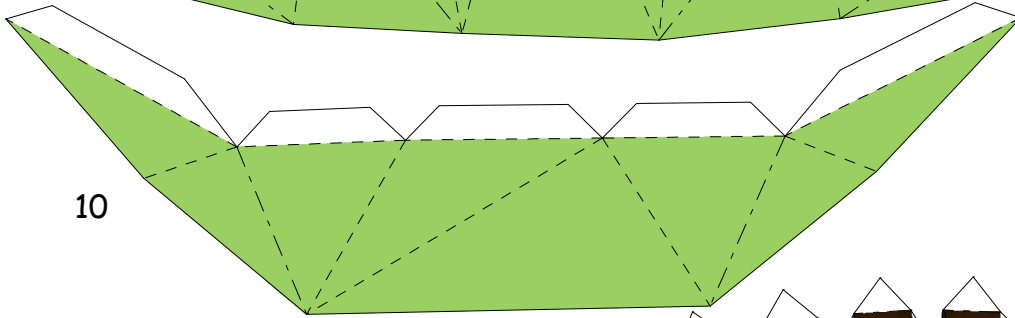
8



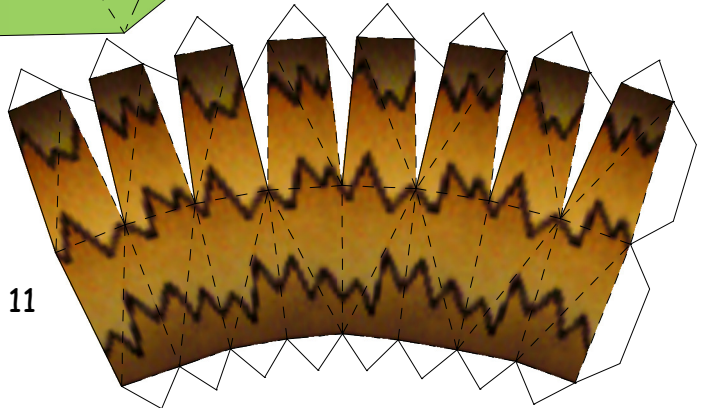
9



10

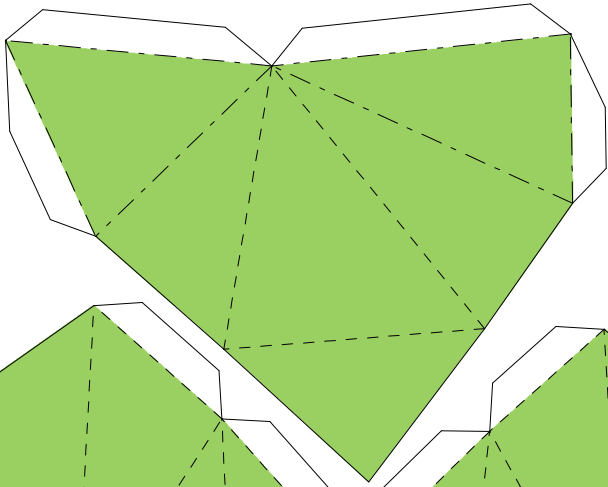


11

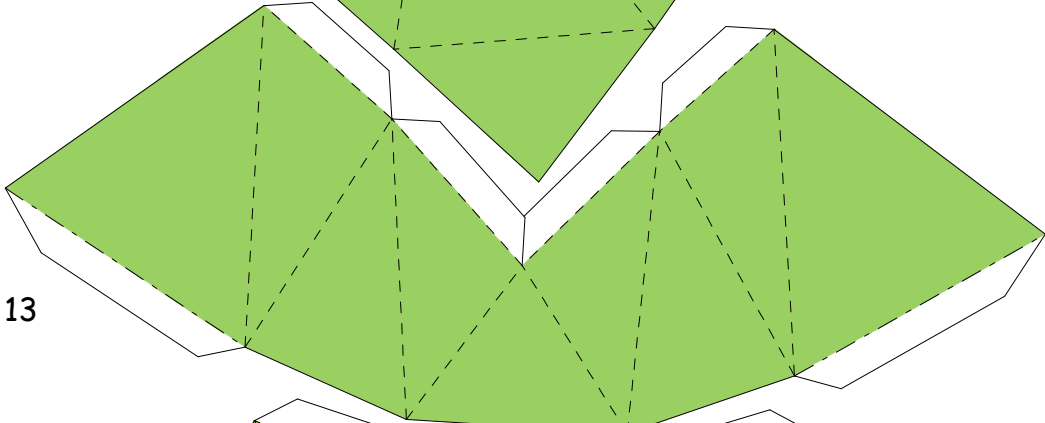


Attach the stalk before closing the body.

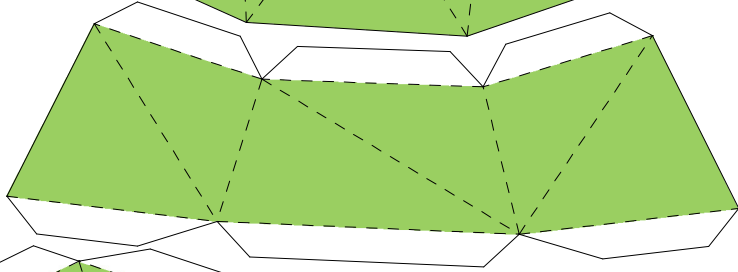
12



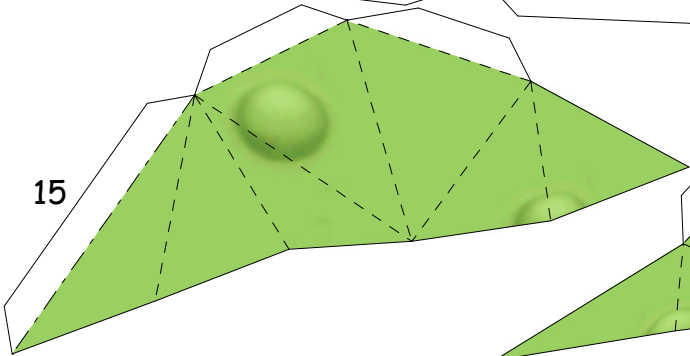
13



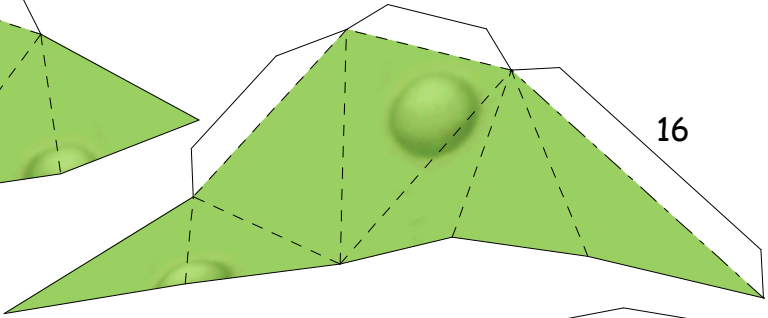
14



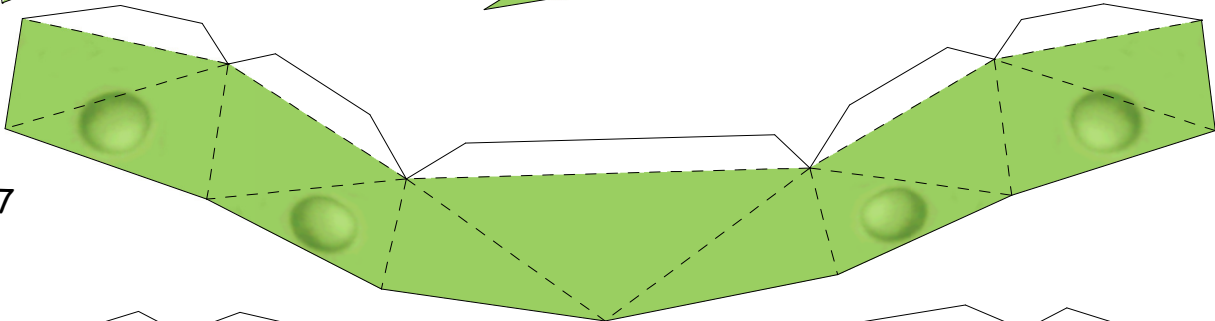
15



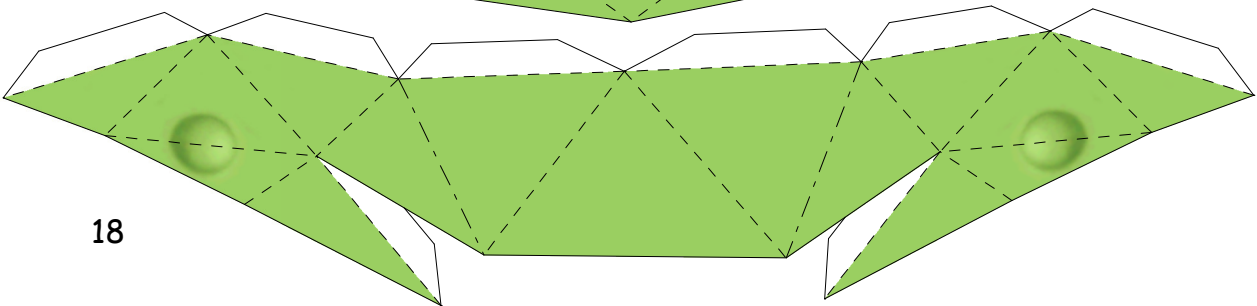
16

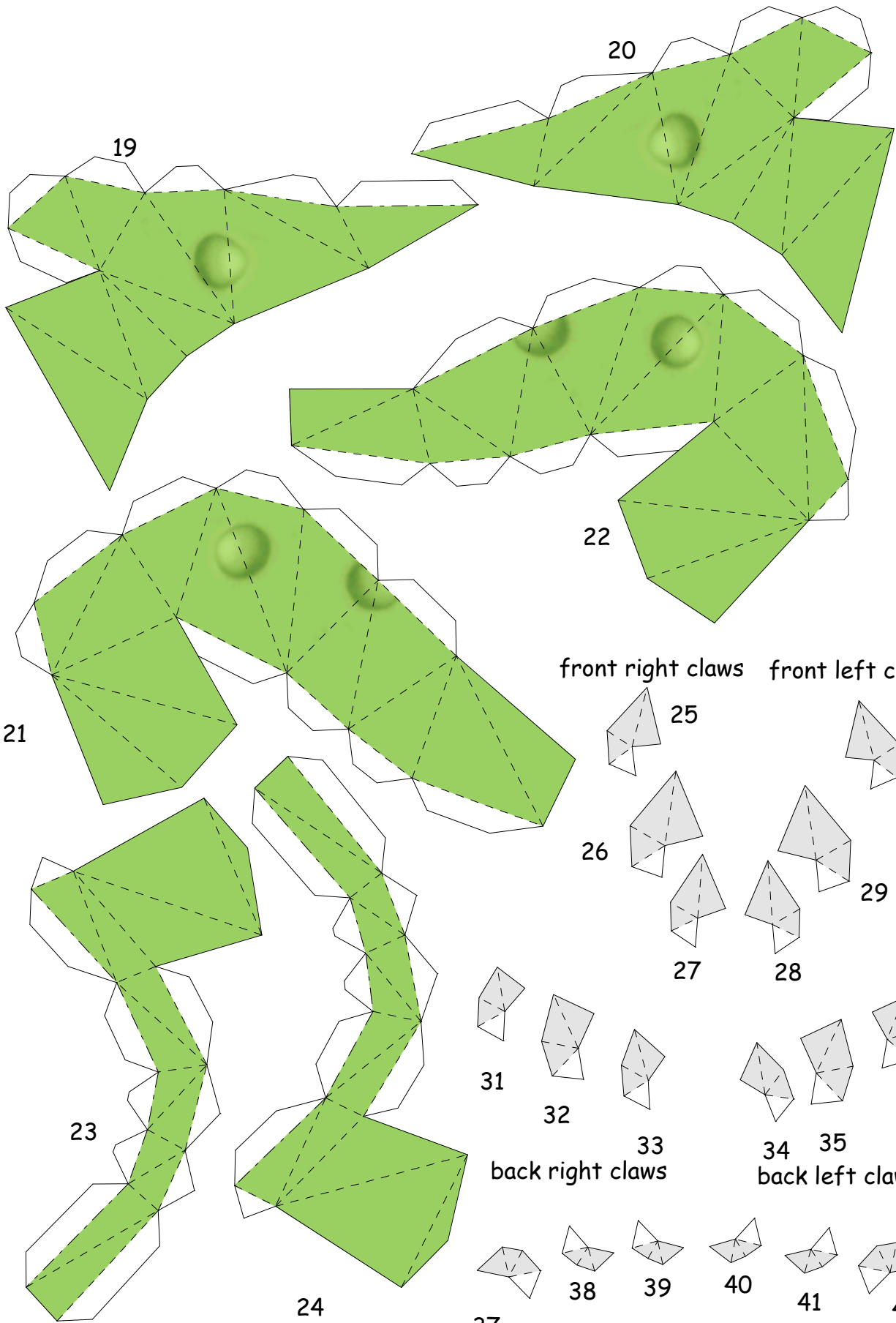


17

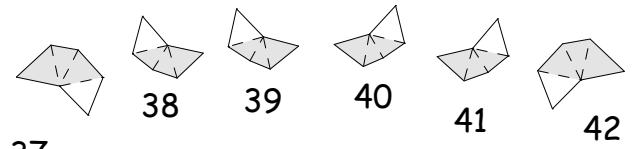
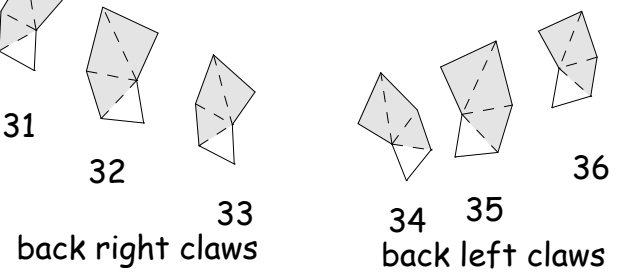
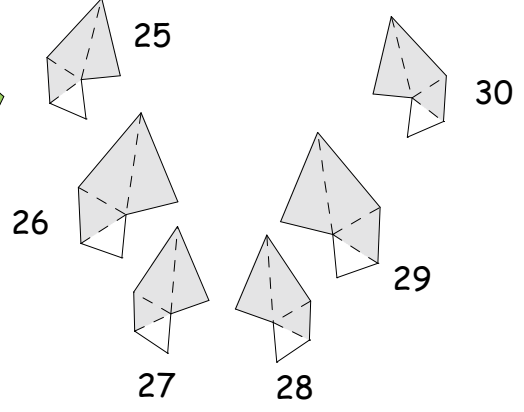


18



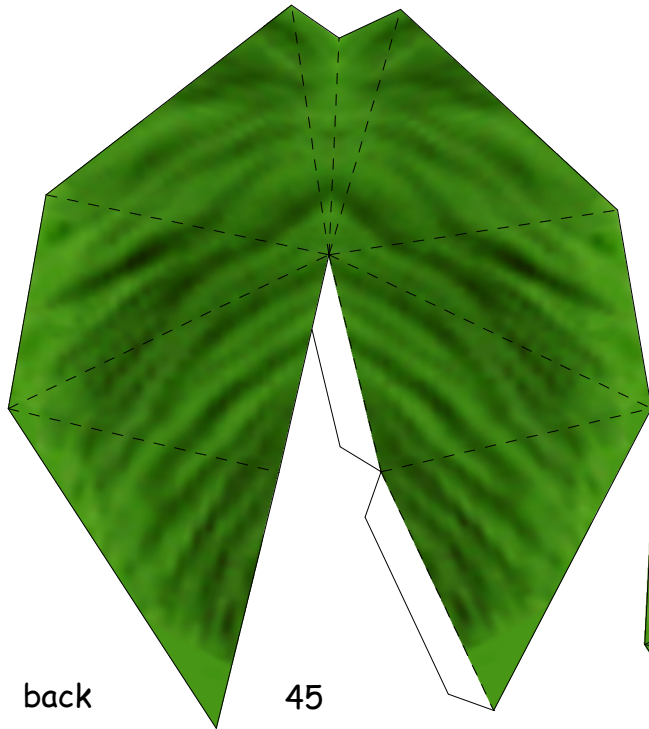
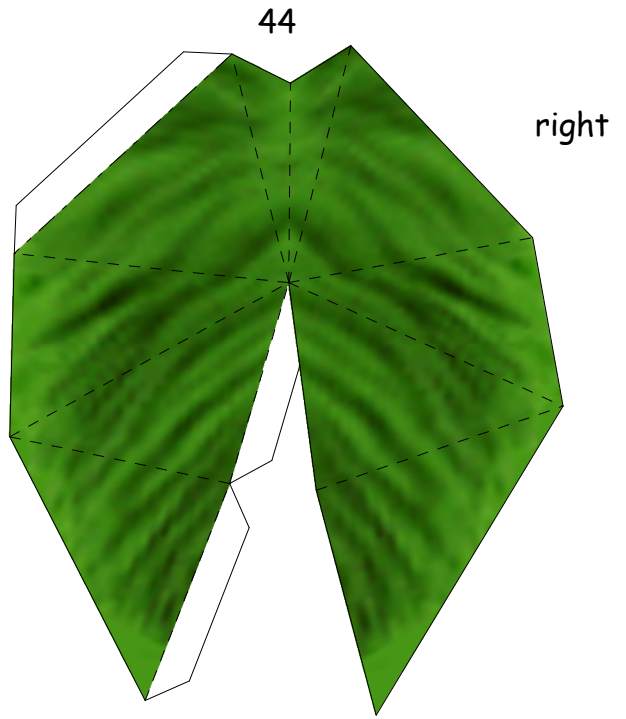
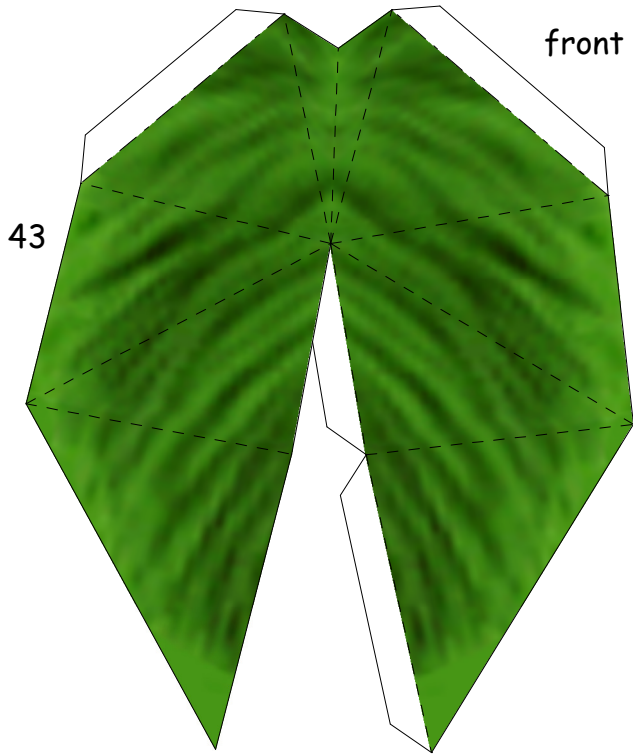


front right claws front left claws



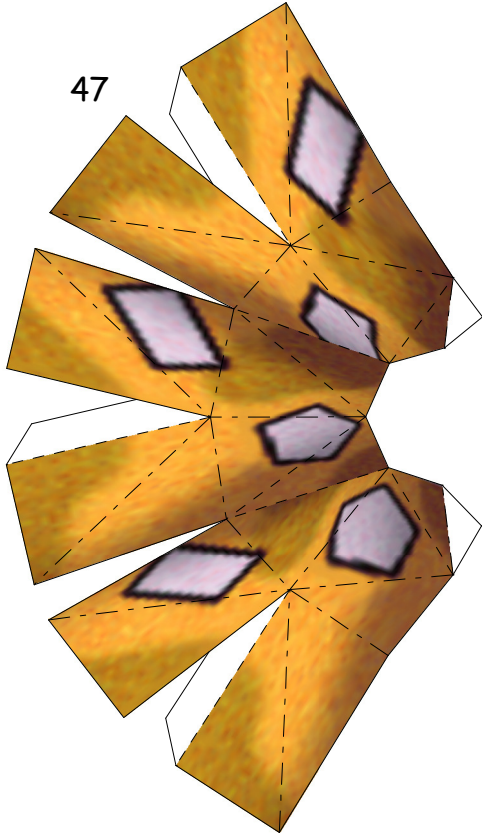
37 bottom right teeth 38 39 40 41 bottom left teeth 42 top left tooth

top right tooth



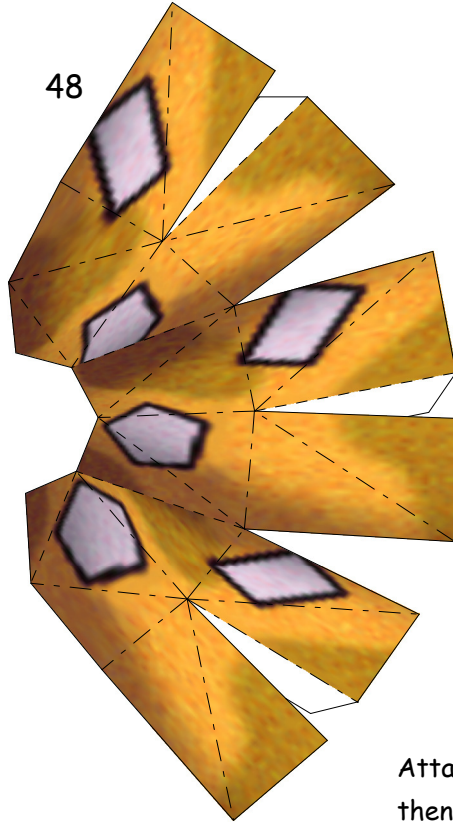
bottom right

47

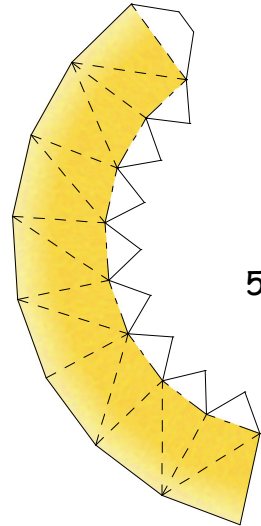


bottom left

48

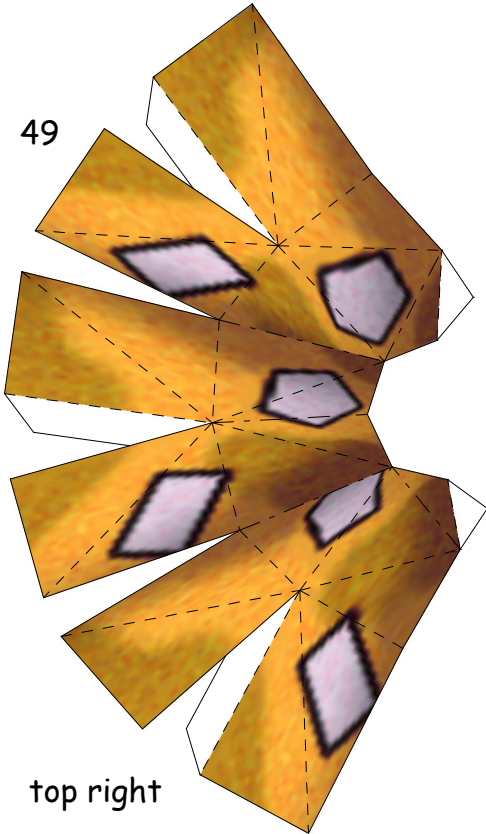


51

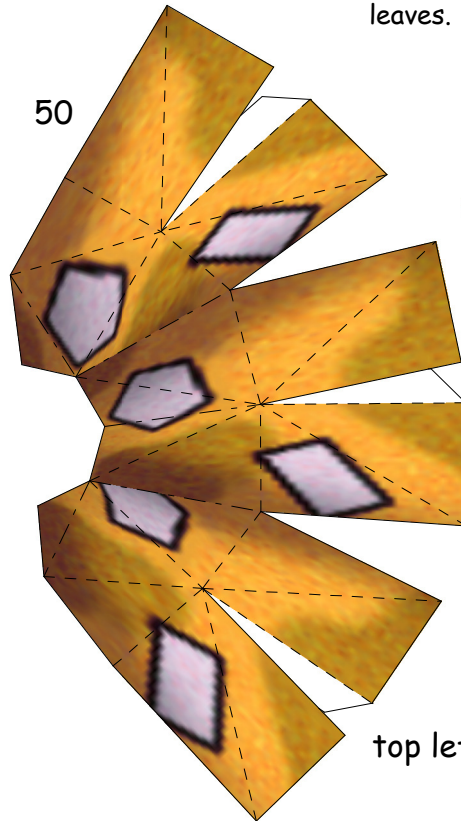


Attach part 51 onto parts 49+50, then glue part 52 to close the top leaves.

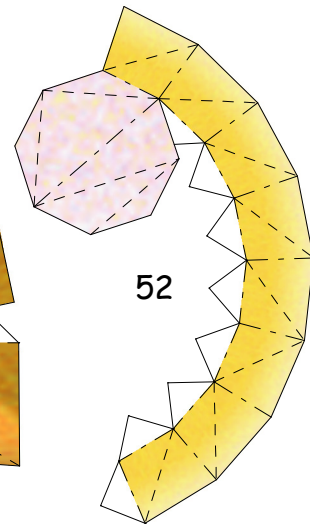
49



50



52



top right

top left